



# Model Econom Town

Meet Your Future Business At Reliance MET



# Contents

Model Economic Township (MET) Overview

Value Proposition for Manufacturing Companies at MET

Proposed Plot Location



# Project Promoter – Reliance Industries Limited

Mr. Dhirubhai Ambani,  
Founder

**Reliance Industries Limited (RIL)** started its business in Polyester (1966), expanded to Textile (1975), collaborated with Dupont (1980), entered Petroleum (1991), commissioned Telecom (1995), largest Refinery at single location (2000), Gas exploration (2002), Jio (4G) (2010)...

Over the last four decades RIL has integrated across the energy and materials value chain and has also created a strong presence in the rapidly expanding Indian retail and telecommunications sectors

Ranked in top 100 of Fortune Global 500 List | Largest Private and Most Profitable Company in India

**\$ 94.9 billion**

Rs. 6,59,205 crore  
Annual Revenue (2019 – 20)

**\$ 6.3 billion**

Rs. 44,324 crore  
Net Profit (2019 – 20)

**150+**

Major Products and Brands across energy and service sectors

**Largest**

*Refining complex globally – 1.4 MMBPD of crude processing at a single location*

**2nd Largest**

Producer of Polyester fibre/yarn, globally

**4th Largest**

Producer of PTA, globally

**5th Largest**

Producer of PP, globally

**Largest**

Producer of PX, globally

**6th Largest**

Producer of MEG, globally

*Producer of Polyester fibre and Yarn, globally*

**Domestic** fields and **Overseas** JVs in North America

**11,700+**

Retail Stores across India

**1,400**

Retail Petroleum Network

**Jio**

State-of-the-Art pan India 4G Services rolled out with 388 million subscribers till May 20

*Retailer in India by Revenue (Reliance Retail)*



Industries Limited

Mr. Mukesh Ambani,  
CMD



# Model Economic Township (MET)



## North India's only IGBC Gold Certified Township

Developed by **Reliance Industries Limited**

Over **1900 acre** Industrial License area out of total **~8250 acres**

**Integrated Township** - Industrial, Residential and Commercial spaces

**350+** Industrial customers  
**800+** Residential customers

Located on Growth Corridors SH15, NH48 and NH1  
\*JLL Livability Report

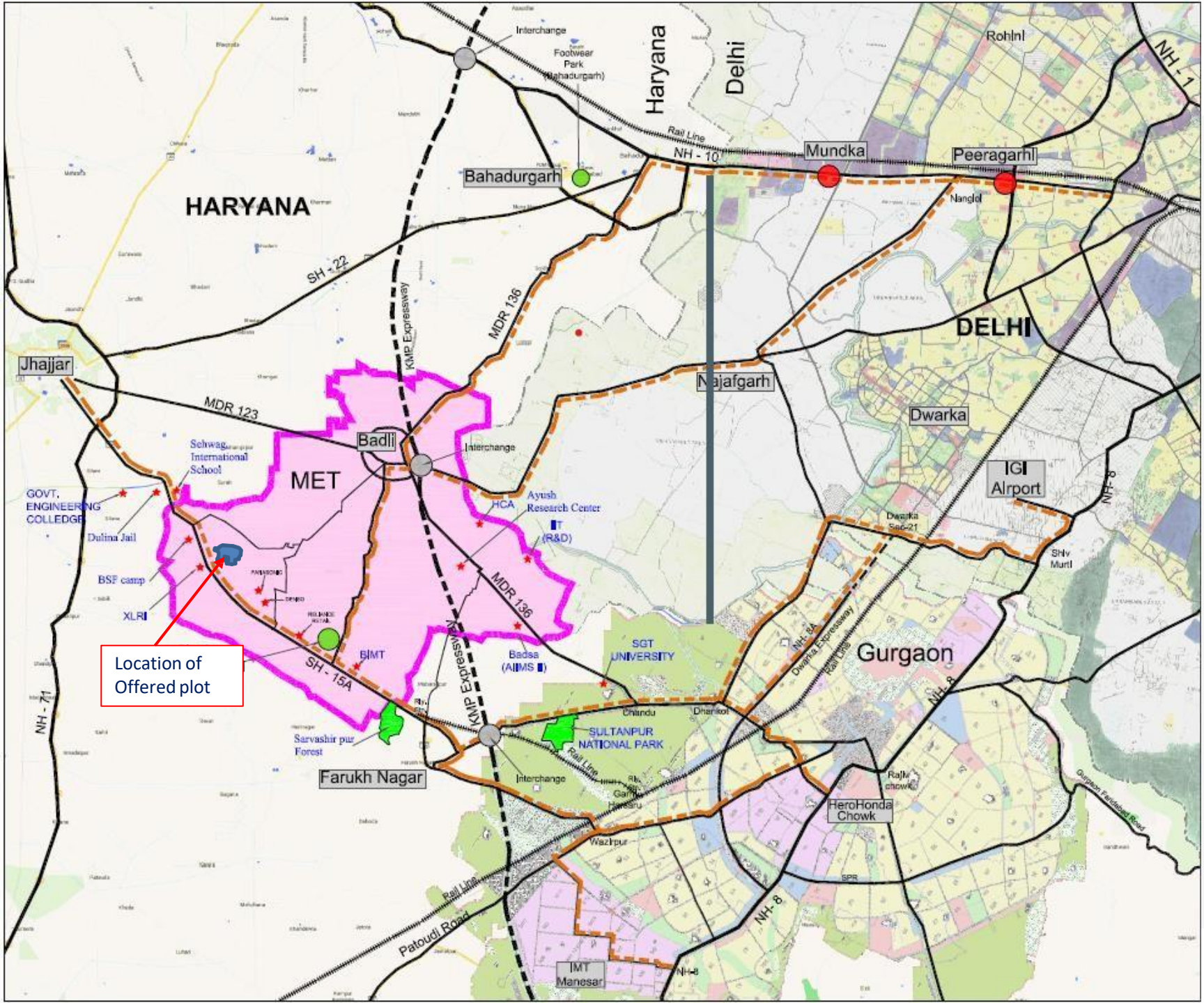
Master Plan by **JTC Singapore**

**Developed Industrial Plot** Built to Suit, Plug & Play

Professional Operational & Maintenance Services

Established eco-system of Logistics & Manufacturing companies

MET is **IGBC Gold** Rated Industrial Township – only township in North India



## METL Industrial Township



## RT Road Connectivity

### DISTANCE OF SITE

Bahadurgarh-Badli - METL	23km
Mundka-Bahadurgarh -Badli- METL	34km
Peeragarhi-Mundka-Bahadurgarh- Badli- METL	40km
Nangloi-Najafgarh -Badli-METL	35km
Najafgarh-Badli- METL	23km
Jhajjar - METL	18km
Farukhnagar- METL	14km
Hero Honda Chowk-Farukhnagar - METL	23km
Hero Honda Chowk-Farukhnagar - METL Via Wazirpur	28km
IMT Manesar (NH-8)- Wazirpur -Farukhnagar - METL	28km
IGI Airport- Dwarka Exp. -Farukhnagar - METL	43km
Pataudi - Haily Mandi - METL	21km

### PROJECT: Map Showing Guide map for METL Industrial Township from various location

DRWN	Atul Gupta
CHKD	Shankar Mukkavilli
DATE	22.03.2022

### TITLE: Guide Map

DRAWING NO.	METL/GM/01
-------------	------------



# MET Multimodal Connectivity

MET has excellent multimodal connectivity from all parts of Delhi NCR and other parts of India through a network of Expressway, National Highways, State Highway, Major District Roads and Railways. The critical connectivity nodes to MET are



KMP- KGP Expressway network



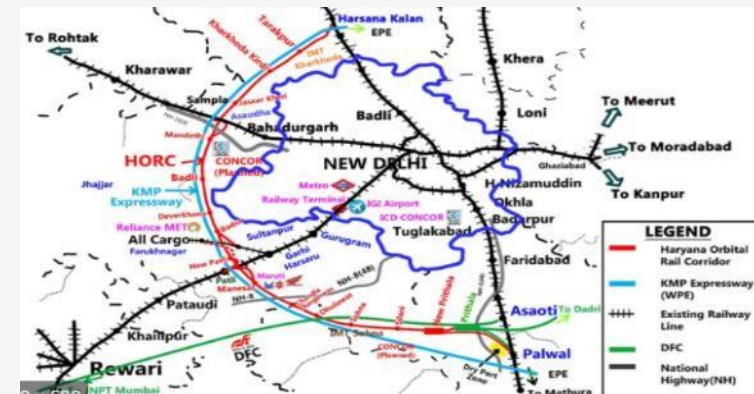
Delhi-Jaipur NH 48



Gurgaon-Jhajjar SH 15A



Farukh Nagar Rail Linkage



Proposed Haryana Orbital Rail Corridor

# Contents

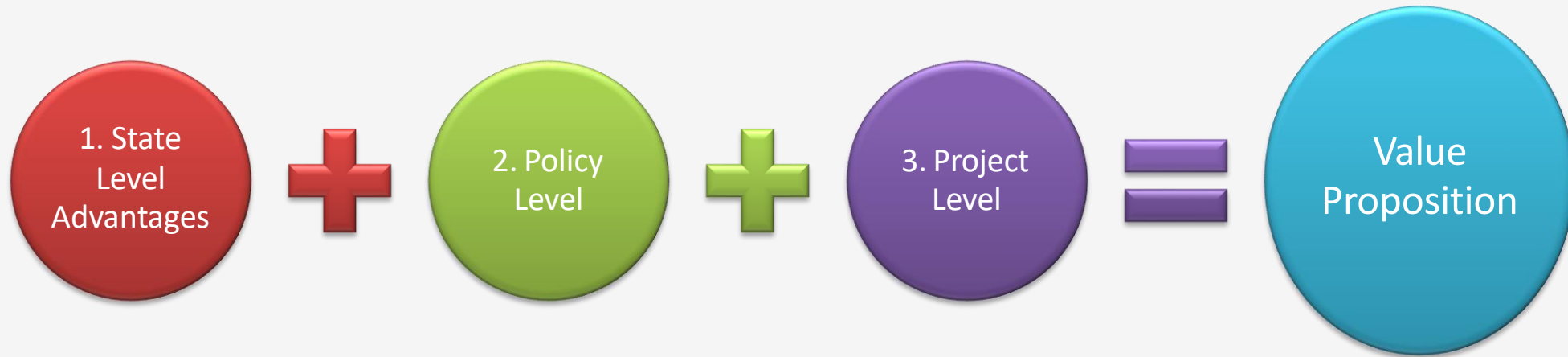
Model Economic Township (MET) Overview

Value Proposition for Manufacturing Companies at MET

Proposed Plot Location



# Value Proposition for Manufacturing Companies at MET





# 1. State Level Advantages



# Haryana Enterprises Promotion Centre

[www.investharyana.in](http://www.investharyana.in) – Single Roof Solution with statutory backing



# Single Window Clearance System – Improved Delivery

Average time for some key services vital for setting up of industry is less than **25 days against 30+15 days = 45 days**

<https://investharyana.in>



Department	Service	Average Time (in days)
HSPC	Consent to Establish (CTE)	26
	Authorization Under HWM	28
	Consent to Operate (CTO)	29
I&C	Registration under Boiler Act	10
Labour-Labour Wing	License for Contract under provision of Contract Labour Act	12
Labour – Fact. Wing	Factory Building Plan	39
	Factory License	25
Average Clearance Time for Services		24

The average clearance time has improved by a reduction of approximately **62%** (from timelines mentioned in respective Acts).



Publicly viewable Performance Dashboard

## 2. Policy Level Advantages



# Incentives announced under HEEP 2020

- **Standard package for**
  - ✓ Mega Projects
  - ✓ Large enterprises
  - ✓ MSME units
  
- **Special package proposed for**
  - ✓ Mega and Ultra Mega Projects over & above standard package
  
- **Sector Specific Incentives**
  - ✓ Higher sector specific incentives available for Auto, Textiles, Defence, Pharmaceutical, Chemical and Data storage sector

# Standard package of Incentive in Block “C” – HEEP 2020

SN	Particulars	Conditions	Mega Projects	Large Enterprise	Medium Enterprise	Small Enterprise	Micro Enterprise	Service Enterprise
	<i>Fixed Capital Investment (FCI)* (Rs.Cr)</i>	<i>Eligibility Criteria</i>	> 100	>50	10-50	1-10	<1	>10
	<i>Turnover (Rs.Cr)</i>		-	>250	50-250	5-50	<5	-
1	Investment subsidy on SGST (subject to 100% of FCI, in case of MSME 125%)	First 5 years	50%	50%	75% (7 years)	75% (7 years)	75% (7 years)	50%
		Next 3 years	25%	25%	35%	35%	35%	-
2	Electricity duty exemption (@ Rs. 0.10/kwh)	For 7 years	100%	100%	-	-	-	75% (5 years)
		For 10 years	-	-	100%	100%	100%	-
3	Stamp duty refund @ 5% on land value		75%	75%	75%	75%	75%	50%
4	Exemption in EDC charges		75%	75%	75%	75%	75%	-
5	Employment Generation subsidy (For SC/ Women/GC having Haryana resident certificate)	For 7 years	Rs. 30,000-36,000/ p / year	Rs. 30,000-36,000/ p / year	Rs. 30,000- 36,000/ p / year	Rs. 30,000-36,000/ p / year	Rs. 30,000- 36,000/ p / year	-
6	Interest Subsidy on term loan	For 5 years, max upto Rs. 20 lakh/year	-	-	-	5%	5%	-
7	Assistance for Environment Compliance							
	- Setting up of Effluent Treatment plant / Air pollution control devices	Max of Rs. 50 lakh	-	-	50%	50%	50%	-
	- Zero Effluent system	Max of Rs. 1 crore	-	-	75%	75%	75%	-
8	Power Tariff Subsidy	upto 30 KW load	-	-	-	Rs.2/unit	Rs.2/unit	-
9	Assistance for technology acquisition	Max of Rs. 50 lakh	-	-	75%	75%	75%	-

Continued ....

# Standard package of Incentive in Block “C” – HEEP 2020

SN	Particulars	Conditions	Mega Projects	Large Enterprise	Medium Enterprise	Small Enterprise	Micro Enterprise	Service Enterprise
10	Testing Equipment Assistance	Max of Rs. 20 lakh/yr	-	-	50%	50%	50%	-
11	Energy / Water / Safety Audit (Subsidy subject to limit)	75% subsidy for audit, plus 40%-50% subsidy on equipments	-	-	Yes	Yes	Yes	-
12	Credit Rating	Once in 5 years, Max of Rs. 2 lakh	-	-	75%	75%	75%	-
13	Interest Subsidy on adoption of Renewable energy like rooftop solar	For 3 years, max upto Rs. 5 lakh/year	-	-	5%	5%	5%	-
14	Quality Certification - ISO / BSI / TS etc	Max Rs 10 lakh	-	-	75%	75%	75%	-
15	ERP system adoption	Max Rs. 5 lakh	-	-	75%	75%	75%	-
16	Patent Registration - Domestic / International	Max Rs. 25 lakh	-	-	100%	100%	100%	-
17	DG Set Subsidy	max. 25%-35% of cost	-	-	Rs 8000/KVA	Rs 8000/KVA	-	-
18	Market development assistance (Reimbursement of participation charges in international / domestic fairs)		-	-	-	Yes	Yes	-
19	Entertainment Tax / SGST (max 100% of FCI)	For 5 years	-	-	-	-	-	50%
13	Interest Subsidy on adoption of Renewable energy like rooftop solar	For 3 years, max upto Rs. 5 lakh/year	-	-	5%	5%	5%	-
14	Quality Certification - ISO / BSI / TS etc	Max Rs 10 lakh	-	-	75%	75%	75%	-
15	ERP system adoption	Max Rs. 5 lakh	-	-	75%	75%	75%	-
16	Patent Registration - Domestic / International	Max Rs. 25 lakh	-	-	100%	100%	100%	-

## 3. Project Level Advantages





# MET - Advantage

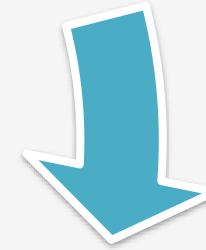
## Ease of Operation

- Professional Operations & Maintenance Services.
- Well planned road network for ease of access & movement of goods
- Assured power & water provided by MET



## Strategic Location with Excellent Connectivity

- Located in NCR along the eastern border of Delhi and North of Gurgaon
- KMP & DFC
- Private Freight Terminal (PFT)



## Faster Turnaround Time

- Clean Land Title
- Converted industrial land
- Developed Land Parcel with plug & play infra.
- Environment Clearance in place



## Thriving Ecosystem

- Social Infrastructure in place, i.e. residential options, retail, schools, hospitals etc.
- Part of the industrial ecosystem results in JIT procurement, availability of other industrial services etc.



# MET – Location and Regional Connectivity

## Expressways

1. KMP Western Expressway
2. Eastern Expressway
3. NPR & SPR – North & South Peripheral Roads

## National Highways

1. NH-8: Delhi – Mumbai
2. NH-71: Jalandhar – Bawal
3. NH-10: Delhi – Hissar
4. NH-1: Delhi – Amritsar
5. NH-24: Delhi – Lucknow
6. NH-2: Delhi – Kolkata

## State Highways

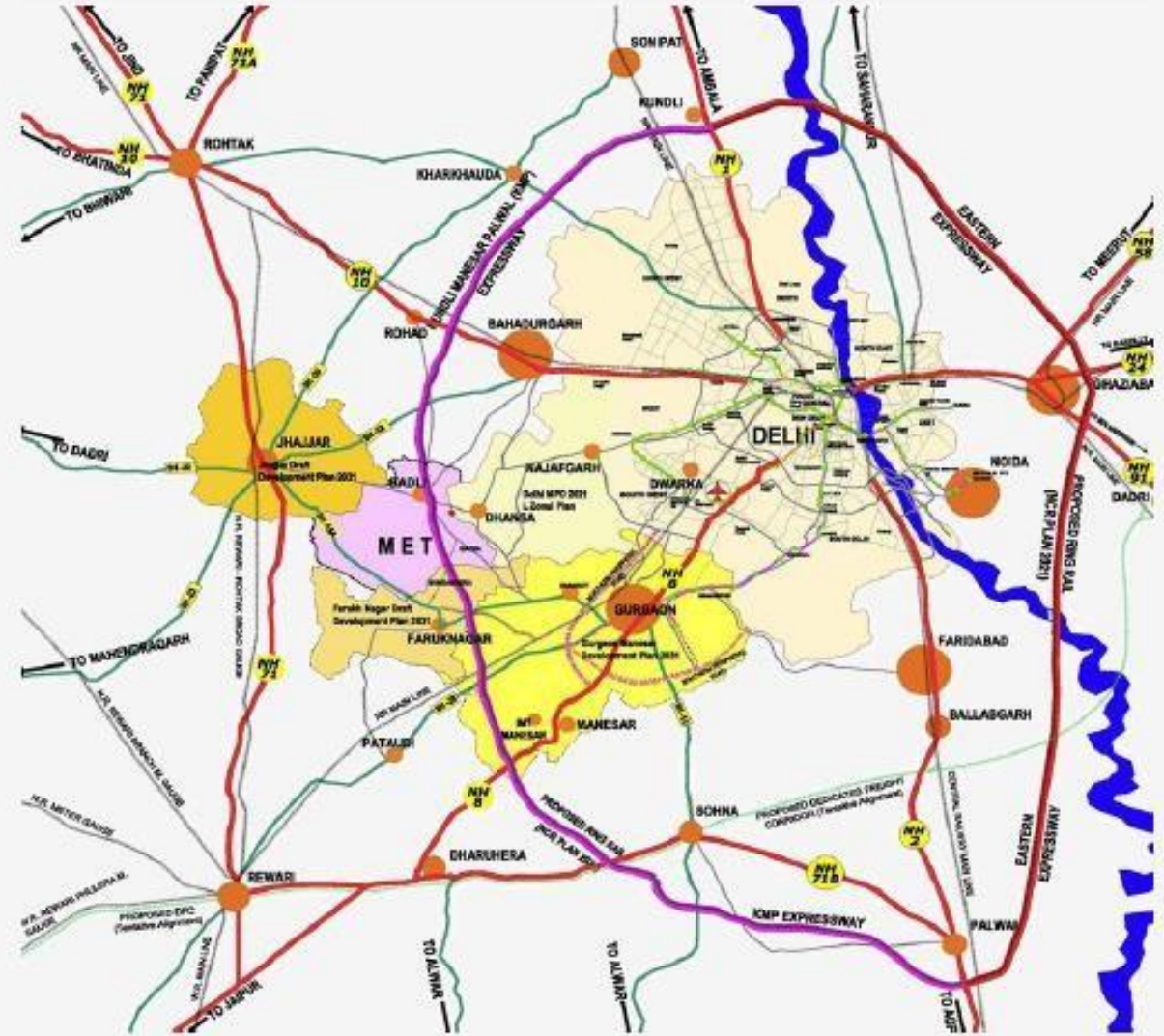
1. SH-15A: Gurgaon – Jhajjar
2. SH-26: Gurgaon – Pataudi - Rewari

## Major District Roads

1. MDR-136: Bahadurgarh – Badli – Chandu
2. MDR-123: Jhajjar – Najafgarh

## Distances of MET

- 13 Km – Jhajjar
- 30 Km – Gurgaon (Hero Honda Chowk)
- 29 Km – Bahadurgarh
- 55 Km – IGI Airport
- 24 Km – IMT Manesar
- 61 Km – Cannaught Place



# Utilities – Water Supply System



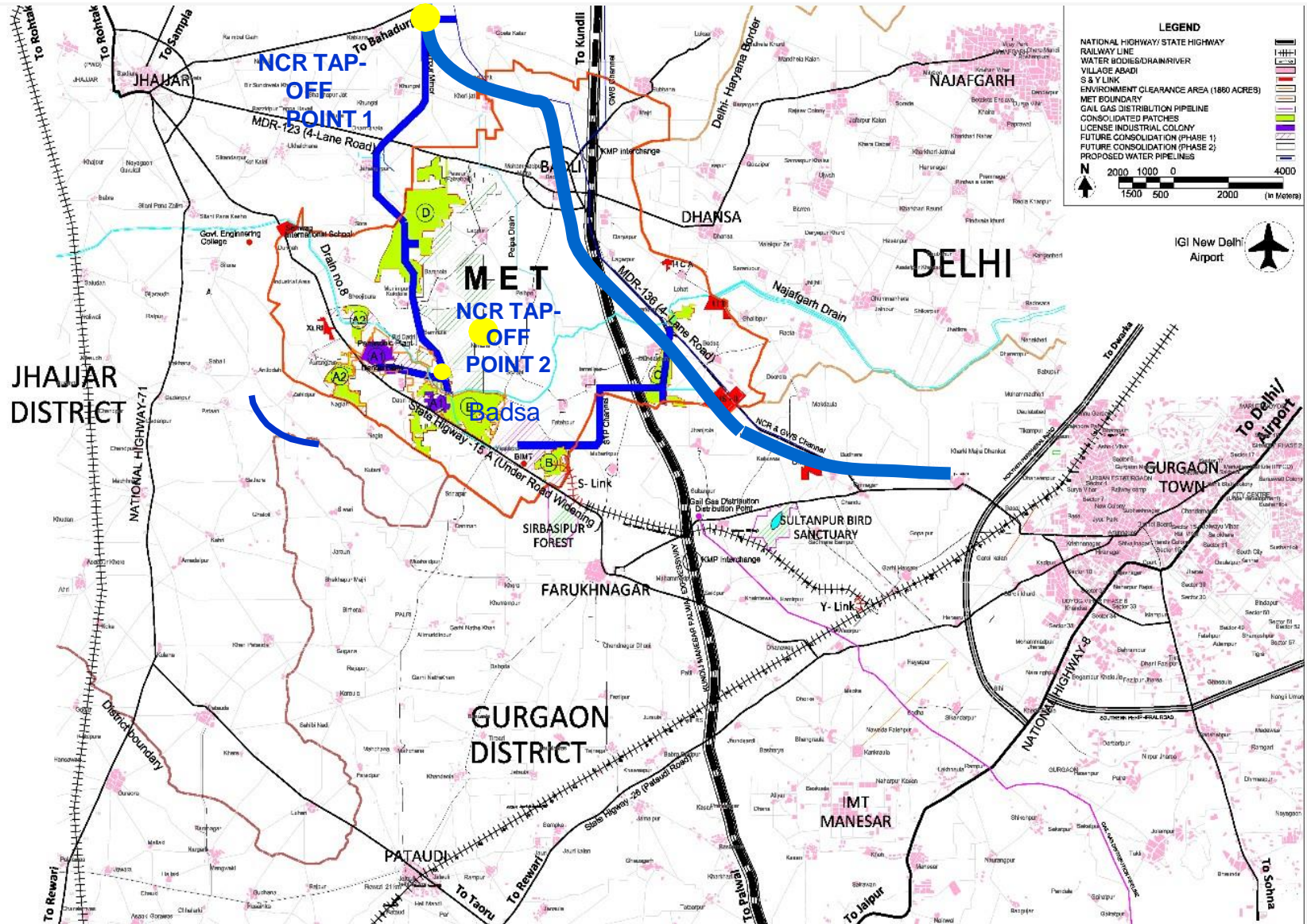
## Water Supply System

- Approved allocation from new NCR Canal – 100 MLD

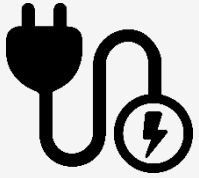
## Projects under development

- 18 Km Water Pipeline
- Water Treatment Plant
- Master Balancing Reservoirs
- Overhead Tanks
- Distribution System

Newly Constructed – NCR Water Channel  
 Tap Off Points for MET From NCR Channel  
 MET Water Main Alignments

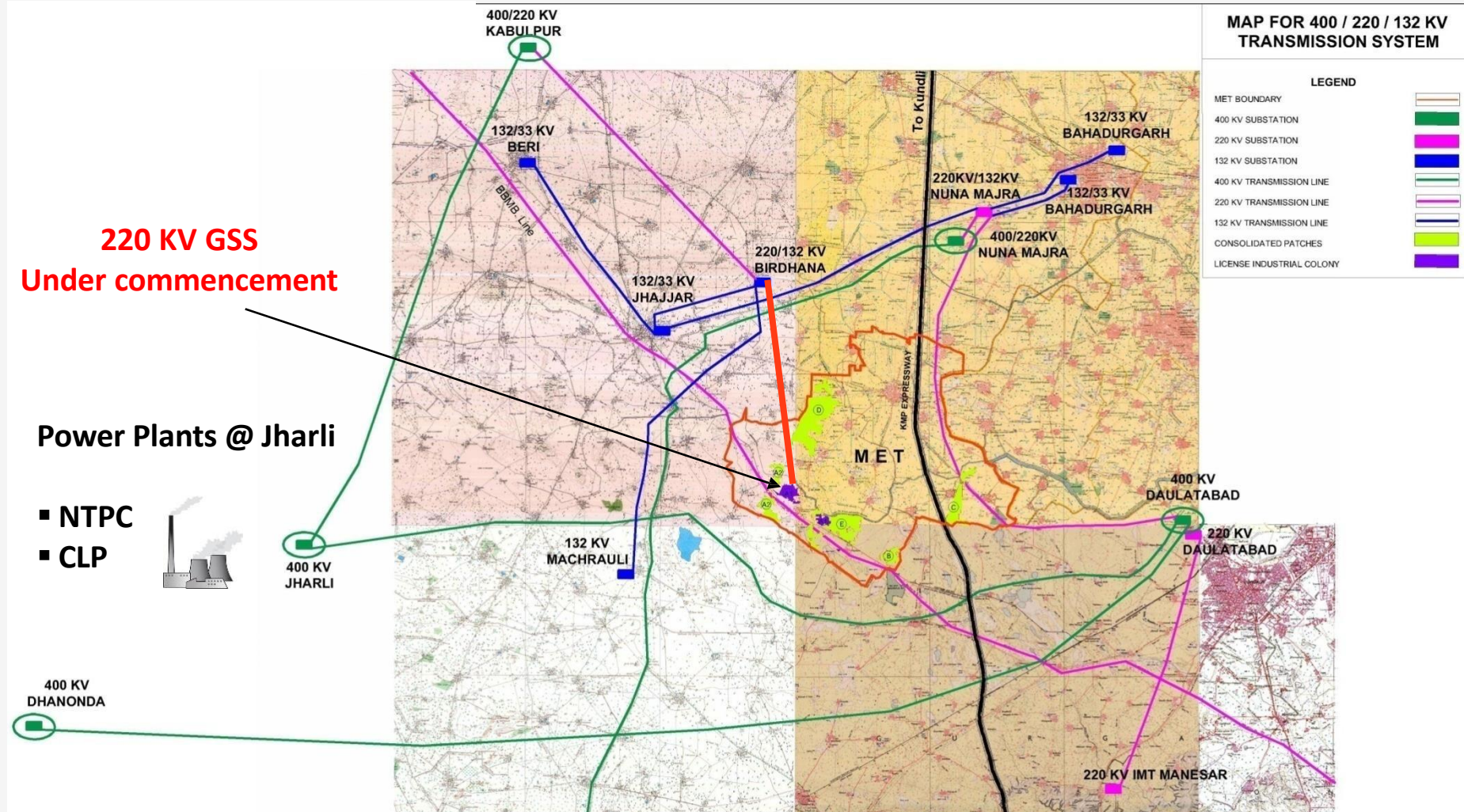


# MET – Power Network USP



## Power Supply System

- 24/7 Reliable Power
- 220 KV double circuit transmission line from Bhadana (1st Source) as well as Bahadurgarh (2nd Source for redundancy) from National Grid
- Electrical distribution infra through under ground distribution
- Load management through Rig Main Unit
- Complete Underground System

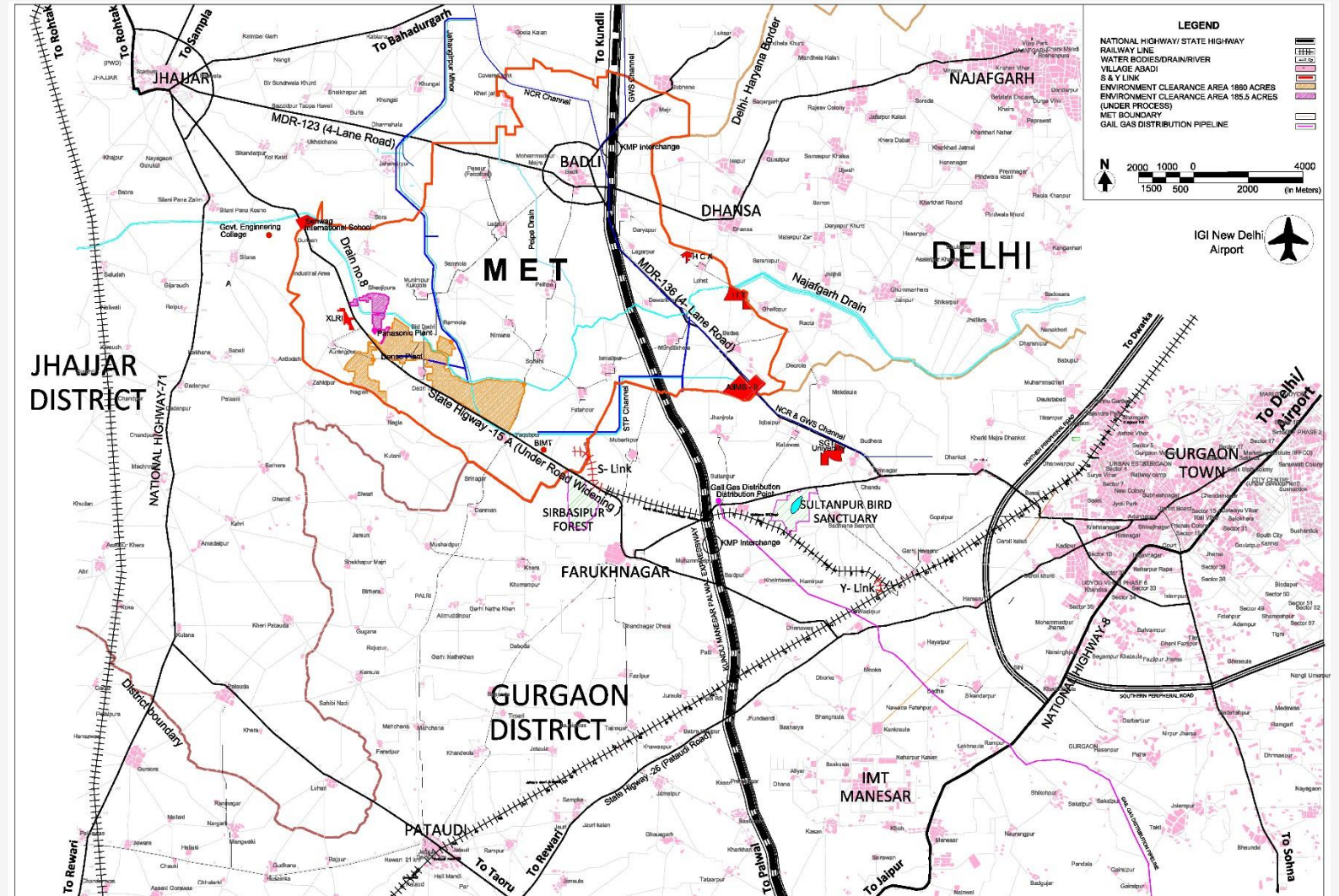


# Environment Clearance



## Area of Environment Clearance

- EC obtained for 2100 acres development



# Manpower – Skilling and Employment



**MET trains the local youth to acquire the following employable skills**

*Data Entry Operator*

*Call Center Executive*

*Security Guard*

*Ground Staff*

*Packer*

*Shop Floor*

**And have been placed in the following companies**

*Reliance Retail*

*Flipkart*

*Stellar Value chain*

*First Cry*

*Udaan*

**MET also works with many labor contractors to provide employees to manufacturing units**

# Reliance MET – Development Snapshot

## Development Around MET – Centers of Excellence



### IIT-Delhi R&D

IIT-Delhi research centre on AI, ML, Robotics and other advanced topics and will have thousands of scientists and engineers.



XLRI facility will have some of the brightest management graduates in the country.



### AIIMS

300+ bed AIIMS National Cancer Research Facility near Reliance MET in Jhajjar dist., with thousands of highly qualified doctor and nurses working and living in the vicinity.



SGT university with its multi-disciplinary programs has more than 10,000 students who pass out every year.



### Sehwan International School

Excellence in Leadership

Sehwan International School with its accent on sports, provides well balanced curriculum for holistic development for children.



# Contents

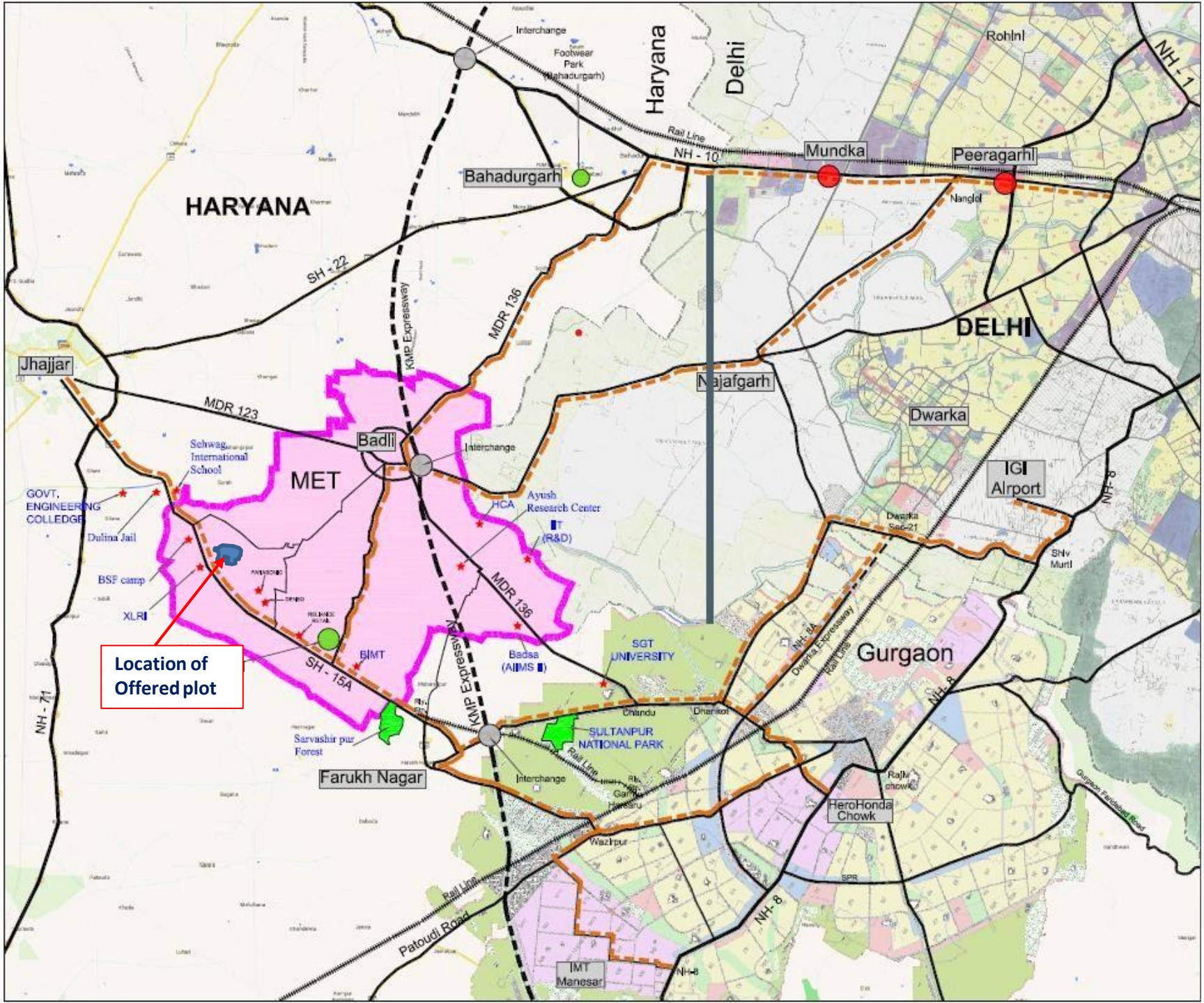
Model Economic Township (MET) Overview

Value Proposition for Manufacturing Companies at MET

Proposed Plot Options







# METL Industrial Township

# RT Road Connectivity

DISTANCE OF SITE	
Bahadurgarh-Badli - METL	23km
Mundka-Bahadurgarh -Badli- METL	34km
Peeragarhi-Mundka-Bahadurgarh- Badli- METL	40km
Nangloi-Najafgarh -Badli-METL	35km
Najafgarh-Badli- METL	23km
Jhajjar - METL	18km
Farukhnagar- METL	14km
Hero Honda Chowk-Farukhnagar - METL	23km
Hero Honda Chowk-Farukhnagar - METL Via Wazirpur	28km
IMT Manesar (NH-8)- Wazirpur -Farukhnagar - METL	28km
IGI Airport- Dwarka Exp.-Farukhnagar - METL	43km
Pataudi - Haily Mandi - METL	21km

**PROJECT:**  
**Map Showing Guide map for METL Industrial Township from various location**

DRWN	Atul Gupta
CHKD	Shankar Mukkavilli
DATE	22.03.2022

**TITLE:**  
**Guide Map**

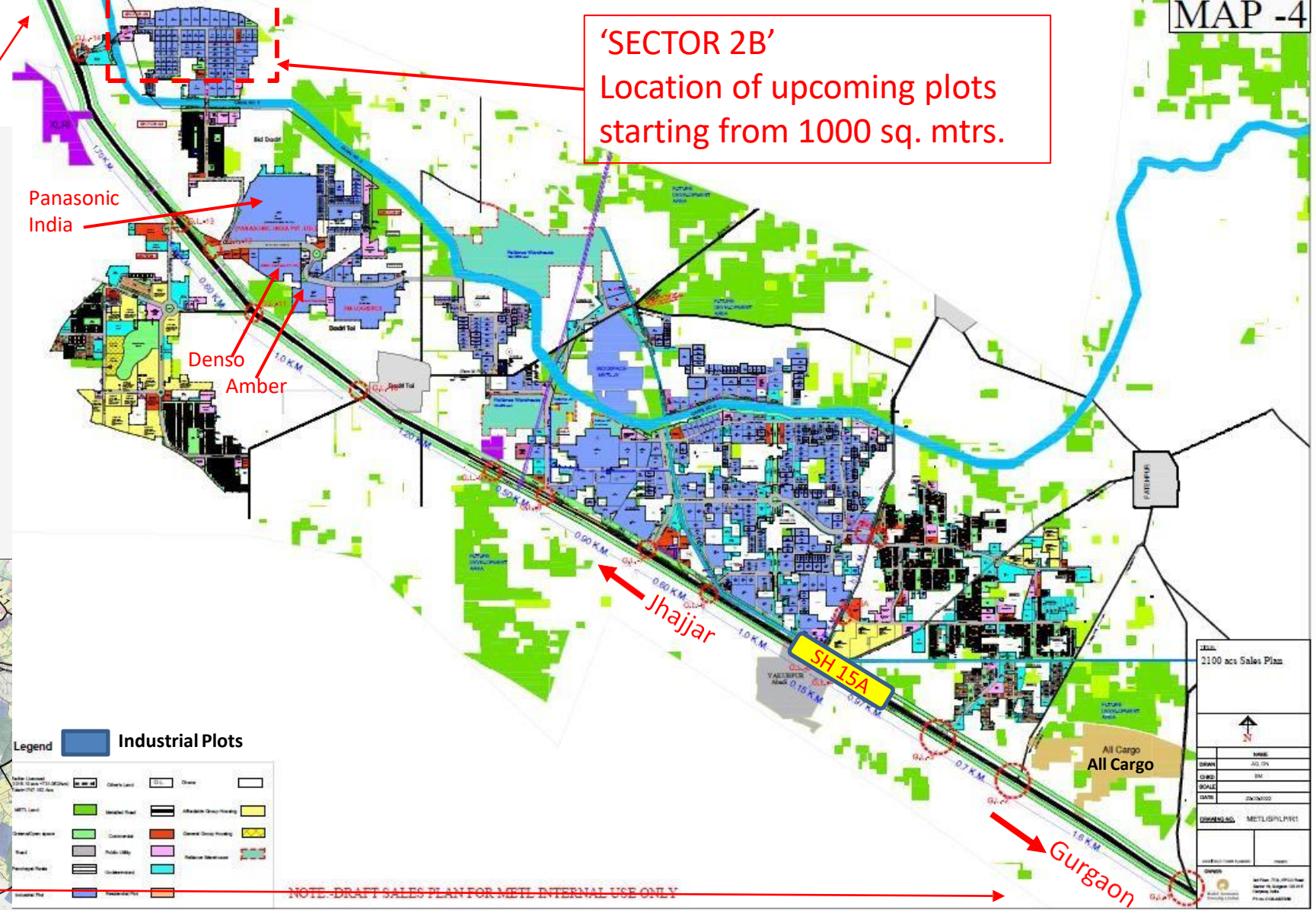
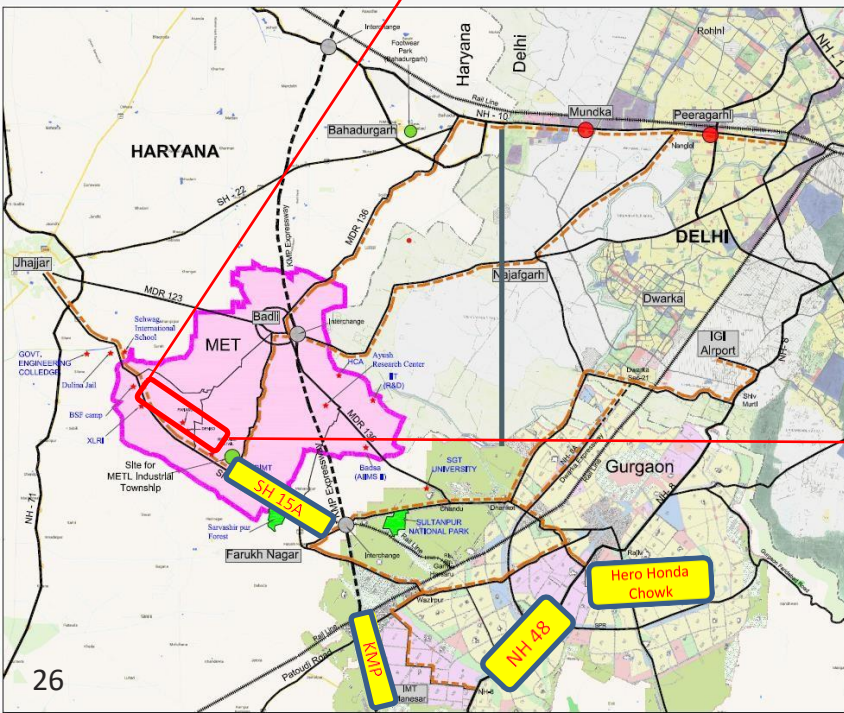
**DRAWING NO.** METL/GM/01



# MET Proposed Plot Location

Key Distance – Offered Plot

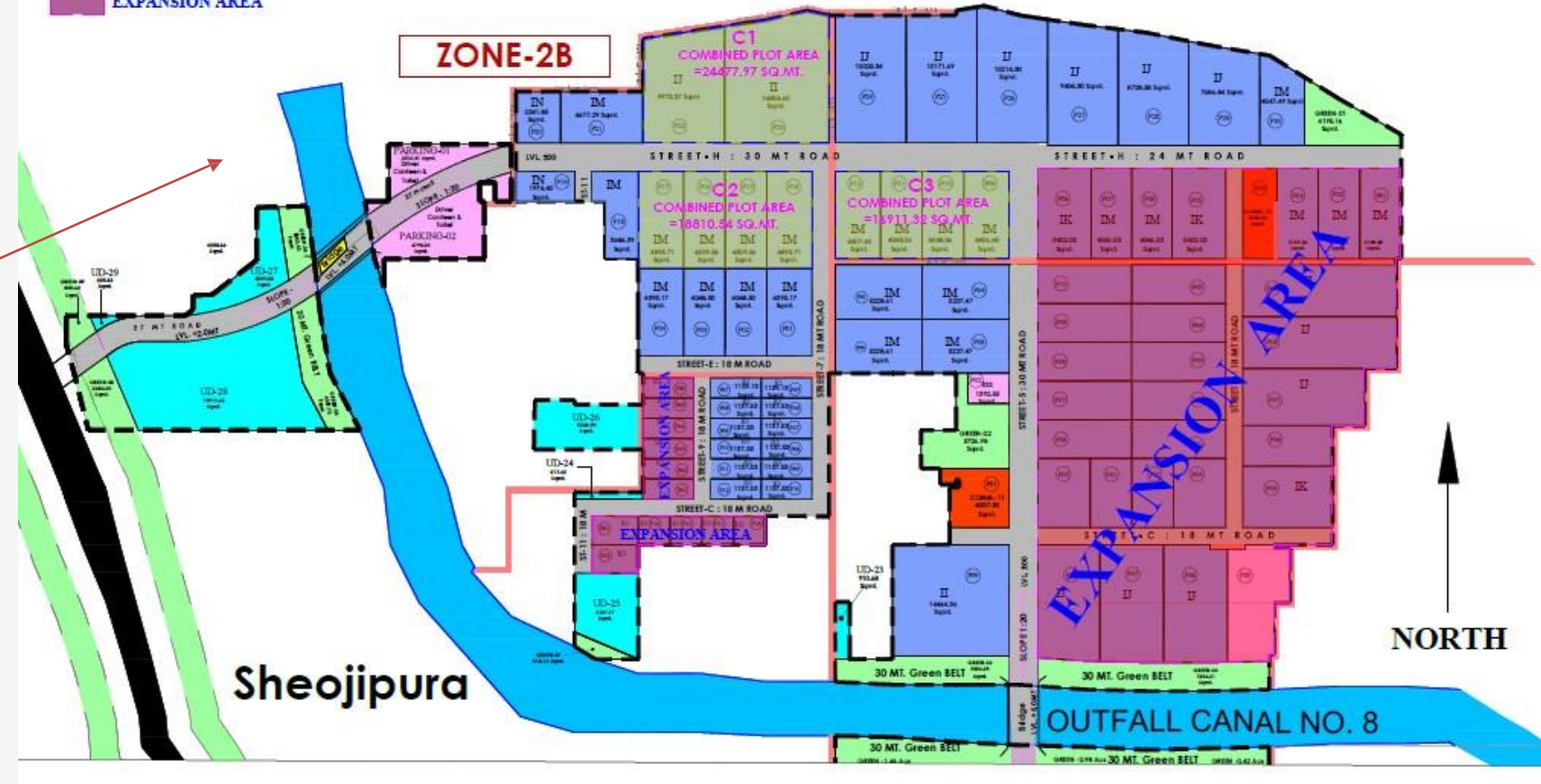
1. KMP: ~12km
2. Manesar: ~35 km
3. Hero Honda Chowk: ~30 km



# MET Sector 2B

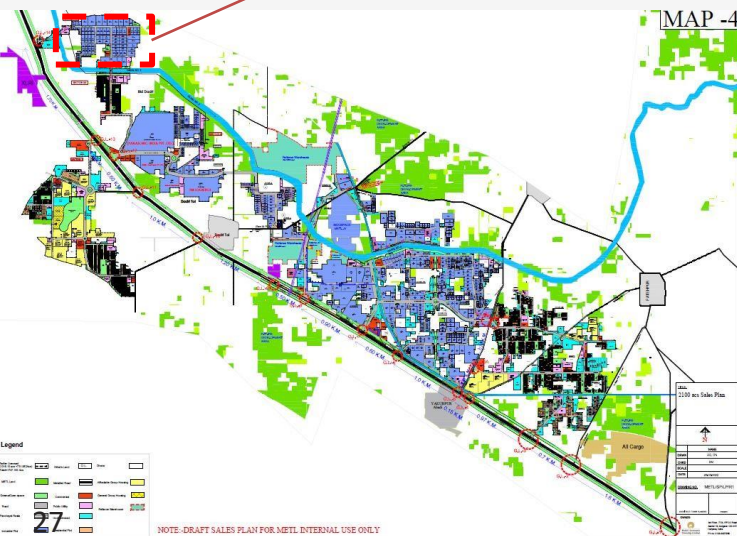
SECTOR - 2B

- LEGEND:-
- AVAILABLE PLOTS
  - COMBINED PLOTS
  - EXPANSION AREA



Key Distance – Offered Plot

1. KMP: ~12km
2. Manesar: ~35 km
3. Hero Honda Chowk: ~30 km



# MET – Site pictures



# MET Logistics Development

IndoSpace



Reliance NDC



FM Logistics



# MET Site Pictures

Road Network & Landscaping



Fire Station



STP



# MET Power Network



220 KV SS

Under Construction



33/11 KV SS



Operational

# MET Water Supply Network

UGH and OHT in Sector 3



Water Treatment Plant



Water Pumping Station





# MET Water Treatment

**Water treatment unit**



**1st Module of UF based 3.125 MLD unit. Membrane for treatment unit procured from Asahi KASEI -Japan**

**Clear water reservoir of 5 million liters capacity to store treated water**



# MET Institutes of Excellence & Eminence

Development in Proximity to MET

## SGT University

4 kms from MET  
Badsa Development



## AIIMS Badsa

2 kms from MET  
Badsa Development



## Ayush Naturopathy Institute

2 kms from MET  
Badsa Development



## XLRI NCR campus

1 km from MET  
Sector 3 Development



# MET Institutes of Excellence & Eminence (Cont'd)

Development in Proximity to MET

**Govt Engineering College**



4 kms from MET  
Sector 3 Development

**Sehwag International School**



3 kms from MET  
Sector 3 Development

For more information, please feel free contact to:

Akshay Sehgal

9999322099/ 9999322019

**Thank You**

